

## SKG-IKOB

Certificatie BV  
Poppenbouwing 56,  
NL-4191 NZ Geldermalsen  
Postbus 202  
NL-4190 CE Geldermalsen  
Tel: +31(0)88-244 01 00  
E-mail: [info@skgikob.nl](mailto:info@skgikob.nl)  
Website: [www.skgikob.nl](http://www.skgikob.nl)

## European Technical Assessment

**ETA-23/0199**  
**Of 20/06/2023**

### General part

**Technical Assessment Body issuing the European Technical Assessment:**  
**SKG-IKOB Certificatie BV**

**Trade name of the construction product**  
**Product family to which the**  
**construction product belongs**

**Manufacturer**

**Manufacturing plants**

**This European Technical Assessment**  
**contains**

**This European Technical Assessment is**  
**issued in accordance with regulation**  
**(EU) No 305/2011, on the basis of**

**PROFiSEAL FSA ACRYL**  
**Fire Stopping and Sealing Product:**  
**Linear Joint and Gap Seals**

**CG PROFESSIONAL / Caupo Group Oy**  
Temmeksentie 3  
90400 Oulu  
Finland  
Tel.: +358 (0)201 580 700  
E-mail: [info@caupo.fi](mailto:info@caupo.fi)  
Web: [www.cg-professional.fi](http://www.cg-professional.fi)

**P01**

11 pages including 2 Annex which form an integral part of  
this assessment.

EAD 350141-00-1106, edition September 2017

Translations of this European Technical Assessment in other languages shall fully correspond to the original issued document and should be identified as such.

Communication of this European Technical Assessment, including transmission by electronic means, shall be in full. However, partial reproduction may be made, with the written consent of the issuing Technical Assessment Body. Any partial reproduction has to be identified as such.

## Specific parts

### 1 Technical description of the product

PROFiSEAL FSA ACRYL is used to form a joint seal in linear joints, voids, gaps and other discontinuities within one or between two or more construction elements to reinstate the fire resistance performance of wall constructions.

Product	Properties
PROFiSEAL FSA ACRYL	PROFiSEAL FSA ACRYL is an acrylic sealant. Supplied in liquid form contained within 310 ml cartridges and 600 ml sausages. The Sealant is gunned into the linear joint of adjacent separating elements, to a specified depth, if necessary utilizing PE / PU backer rod.

### 2 Specification of the intended uses in accordance with the applicable Assessment Document (hereinafter EAD)

#### 2.1 Intended use

The intended use of system PROFiSEAL FSA ACRYL is to reinstate the fire resistance performance of linear joints in rigid wall constructions and in rigid floor constructions.

The specific elements of construction that the system PROFiSEAL FSA ACRYL may be used to provide a joint seal in, are as follows:

- Flexible walls
- Rigid walls
- Rigid floors

The supporting construction must be classified in accordance with EN 13501-2 for the required fire resistance period. Detailed information and data is given in Annex A.

Environmental conditions are:

Type Z<sub>2</sub>: intended for uses in internal conditions with humidity lower than 85 % RH excluding temperatures below 0°C, without exposure to rain or UV.

#### 2.2 Working life

The assumed working life of PROFiSEAL FSA ACRYL is for the intended use 25 years, provided that the assembled product is subject to appropriate installation, use and maintenance. The indication of 25 years cannot be interpreted as a guarantee given by CG-PROFESSIONAL, but should only be regarded as a means for choosing the right products in relation to the expected economically reasonable working life of the works.

### 3. Performance of the product and references to the methods used for its assessment

The assessment of fitness for use has been made in accordance with EAD 350141-00-1106.

PROFiSEAL FSA ACRYL		
No	Essential Characteristic	Product performances
<b>BWR 2 Safety in case of fire</b>		
1	Reaction to fire	B-s1,d0
2	Resistance to fire	See annex A
<b>BWR 3 Hygiene, health and environment</b>		
3	Content, emission and/or release of dangerous substances	Declaration of manufacturer
4	Air permeability (material property)	No performance assessed
5	Water permeability (material property)	No performance assessed
<b>BWR 4 Safety and accessibility in use</b>		
6	Mechanical resistance and stability	No performance assessed
7	Resistance to impact/movement	No performance assessed
8	Adhesion	passed
9	Durability	Z <sub>2</sub>
10	Movement capability	See annex A
11	Cycling of perimeter seals for curtain walls	Not relevant
12	Compression set	Not relevant
13	Linear expansion on setting	Not relevant
<b>BWR 5 Protection against noise</b>		
14	Airborne sound insulation	See annex B
<b>BWR 6 Energy economy and heat retention</b>		
15	Thermal properties	No performance assessed
16	Water vapour permeability	No performance assessed

### 4 Assessment and verification of consistency of performance (hereinafter AVCP) system applied, with reference to its legal base

According to the decision 1999/454/EC – Commission Decision of date 22nd June 1999 on the procedure for attesting the conformity of construction products pursuant to Article 20(2) of Council Directive 89/106/EEC as regards fire stopping, fire sealing and fire protective products, published in the Official Journal of the European Union (OJEU) L178/52 of 14/07/1999, see <http://eur-lex.europa.eu/JOIndex.do> of the European Commission<sup>1</sup>, as amended, the system(s) of assessment and verification of constancy of performance (see Annex V to Regulation (EU) No 305/2011) given in the following table(s) applies (apply).

Product(s)	Intended use(s)	Level(s) or class(es)	System(s)
Fire stopping and fire sealing products	For fire compartmentation and/or fire protection or fire performance	Any	1

## 5 Technical details necessary for the implementation of the AVCP system, as provided for in the applicable EAD

### Tasks of the manufacturer

#### *Factory production control*

The manufacturer shall exercise permanent internal control of production. All the elements, requirements and provisions adopted by the manufacturer shall be documented in a systematic manner in the form of written policies and procedures, including records of results performed. This production control system shall ensure that the product is in conformity with this European technical Assessment. The manufacturer may only use initial / raw / constituent materials stated in the technical documentation of this European Technical Assessment.

The factory production control shall be in accordance with the Control Plan of dd/mm/2023 relating to the European technical assessment ETA 23/0199 issued on dd/mm/2023 which is part of the technical documentation of this European technical approval. The "Control Plan" is laid down in the context of the factory production control system operated by the manufacturer and deposited at SKG-IKOB.

The results of factory production control shall be recorded and evaluated in accordance with the provisions of the Control Plan.

### Other tasks of the manufacturer

#### *Additional information*

The manufacturer shall provide a technical data sheet and an installation instruction with the following minimum information:

#### (a) Technical data sheet:

- Field of application:
- Building elements for which the linear joint seal is suitable, type and properties of the building elements like minimum thickness, density, and - in case of lightweight constructions – the construction requirements.
- Limits in size, minimum thickness etc. of the linear joint seal
- Construction of the linear joint seal including the necessary components and additional products (e.g. backfilling material) with clear indication whether they are generic or specific.

#### (b) Installation instruction:

- Steps to be followed
- Procedure in case of retrofitting
- Stipulations on maintenance, repair and replacement

Issued in Geldermalsen, the Netherlands on 20/06/2023

The original English version is signed on behalf of SKG-IKOB

by



ir. H.A.J. van Dartel  
Certification Manager

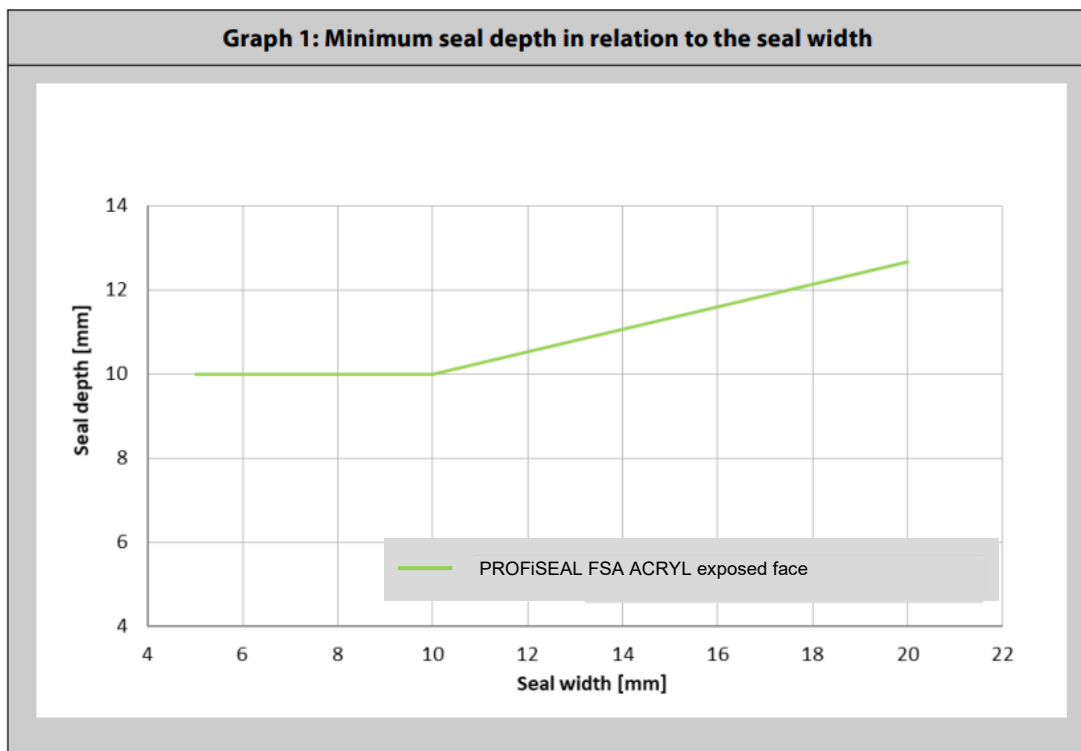
## Annex A – Resistance to fire

Fire resistance classification (vertical linear joint seals in a stone wall) Stone to stone wall thickness $\geq 70$ mm	
<b>PROFiSEAL FSA ACRYL</b> <b>exposed face</b> <b>PROFiPUR FSA FIRE CE</b> <b>unexposed face</b> EI 45 – V – X – F – W 8 to 20 E 240 – V – X – F – W 8 to 20	<b>PROFiSEAL FSA ACRYL</b> <b>applied at unexposed face</b> EI 45 – V – X – F – W 5 to 10 EI 30 – V – X – F – W 10 to 20 E 240 – V – X – F – W 5 to 20

E = Criterion integrity, I = Criterion insulation, V = Vertical application in a vertical wall, X = No movement applied, F = Splice applied in the field, W = Permitted width range in millimeters (see Graph 1 for seal depth)

The following conditions apply:

- the classifications are valid for linear joint seals in a wall with an orientation as mentioned (vertical);
- the linear joint seals may be applied in any type of wall of aerated concrete (class G4/600 or heavier), concrete, limestone or masonry with a minimal thickness as mentioned (70 mm);
- the surfaces of the material on which PROFiSEAL FSA ACRYL and PROFiPUR FSA FIRE CE is applied are thoroughly cleaned and treated with primer and moistened with water when needed. Except for the fully filled linear joint seals, the use of suitable PE / PU backing material is mandatory;
- the depth of PROFiSEAL FSA ACRYL depends on the width of the linear joint seal. The minimum depth of PROFiSEAL FSA ACRYL in relation to the width of the linear joint seal is shown in Graph 1 below. The depth of the sealant may also be increased with respect to the Graph (the lines are the minimum and recommended seal depth). Where the rest of the slot is fully filled with PROFiPUR FSA FIRE CE the seal depth of the PROFiSEAL FSA ACRYL is minimal 3 mm;
- the allowed movement capability in practice is maximized to 7.5 %;
- when PROFiSEAL FSA ACRYL is applied at one face, the classifications are valid for PROFiSEAL FSA ACRYL at the unexposed face or at the exposed face when in combination with PROFiPUR FSA FIRE CE.

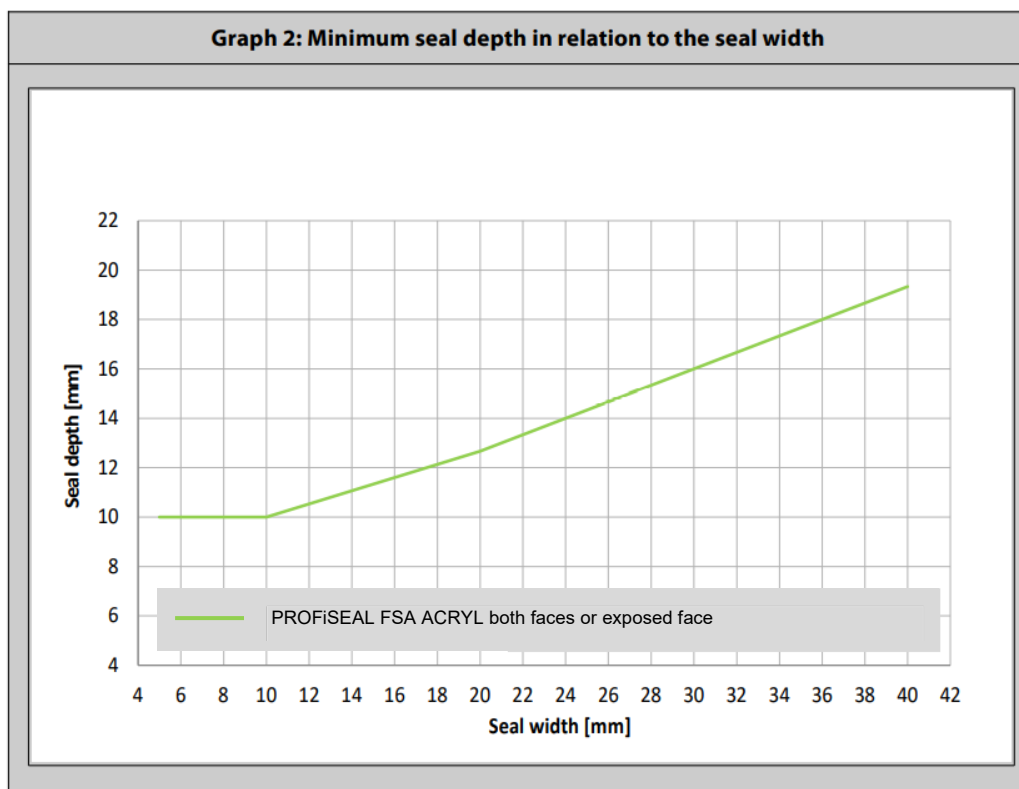


Fire resistance classification (vertical linear joint seals in a stone wall) Stone to stone wall thickness $\geq 100$ mm		
<b>PROFiSEAL FSA ACRYL applied at both faces</b> EI 180 – V – X – F – W 5 to 10 EI 240 – V – X – F – W 10 to 40 E 240 – V – X – F – W 5 to 40	<b>PROFiSEAL FSA ACRYL applied at exposed face</b> EI 180 – V – X – F – W 5 to 40	<b>PROFiSEAL FSA ACRYL exposed face PROFiPUR FSA FIRE CE unexposed face</b> EI 90 – V – X – F – W 8 to 30 E 120 – V – X – F – W 8 to 30 EI 30 – V – X – F – W 30 to 40

E = Criterion integrity, I = Criterion insulation, V = Vertical application in a vertical wall, X = No movement applied, F = Splice applied in the field, W = Permitted width range in millimeters (see Graph 2 for seal depth)

The following conditions apply:

- the classifications are valid for linear joint seals in a wall with an orientation as mentioned (vertical);
- the linear joint seals may be applied in any type of wall of aerated concrete (class G4/600 or heavier), concrete, limestone or masonry with a minimal thickness as mentioned (100 mm);
- the surfaces of the material on which PROFiSEAL FSA ACRYL and PROFiPUR FSA FIRE CE is applied are thoroughly cleaned and treated with primer and moistened with water when needed. Except for the fully filled linear joint seals, the use of suitable PE / PU backing material is mandatory;
- the depth of PROFiSEAL FSA ACRYL depends on the width of the linear joint seal. The minimum depth of PROFiSEAL FSA ACRYL in relation to the width of the linear joint seal is shown in Graph 2 below. The depth of the sealant may also be increased with respect to the Graph (the lines are the minimum and recommended seal depth). Where the rest of the slot is fully filled with PROFiPUR FSA FIRE CE the seal depth of the PROFiSEAL FSA ACRYL is minimal 3 mm;
- the allowed movement capability in practice is maximized to 7.5 %;
- when PROFiSEAL FSA ACRYL is applied at one face, the classifications are valid for PROFiSEAL FSA ACRYL at the unexposed face or at the exposed face when in combination with PROFiPUR FSA FIRE CE.

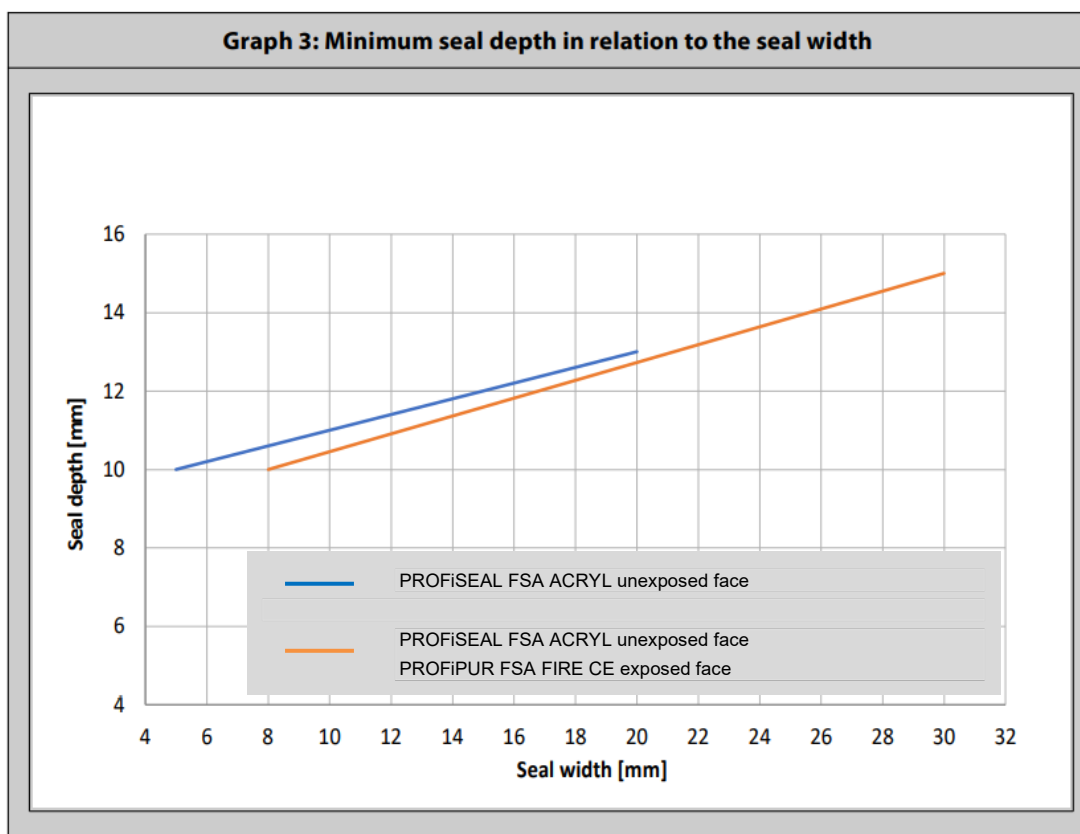


Fire resistance classification (vertical linear joint seals in a stone wall) Stone to stone wall thickness $\geq 115$ mm	
<b>PROFiSEAL FSA ACRYL</b> <b>exposed face</b> <b>PROFiPUR FSA FIRE CE</b> <b>unexposed face</b> EI 180 – V – X – F – W 8 to 30 EI 240 – V – X – F – W 8 E 240 – V – X – F – W 8 to 30	<b>PROFiSEAL FSA ACRYL</b> <b>applied at unexposed face</b> EI 45 – V – X – F – W 5 to 20 EI 240 – V – X – F – W 5 E 240 – V – X – F – W 5 to 20

E = Criterion integrity, I = Criterion insulation, V = Vertical application in a vertical wall, X = No movement applied, F = Splice applied in the field, W = Permitted width range in millimeters (see Graph 3 for seal depth)

The following conditions apply:

- the classifications are valid for linear joint seals in a wall with an orientation as mentioned (vertical);
- the linear joint seals may be applied in any type of wall of aerated concrete (class G4/600 or heavier), concrete, limestone or masonry with a minimal thickness as mentioned (115 mm);
- the surfaces of the material on which PROFiSEAL FSA ACRYL and PROFiPUR FSA FIRE CE is applied are thoroughly cleaned and treated with primer and moistened with water when needed. Except for the fully filled linear joint seals, the use of suitable PE / PU backing material is mandatory;
- the depth of PROFiSEAL FSA ACRYL depends on the width of the linear joint seal. The minimum depth of PROFiSEAL FSA ACRYL in relation to the width of the linear joint seal is shown in Graph 3 below. The depth of the sealant may also be increased with respect to the Graph (the lines are the minimum and recommended seal depth). Where the rest of the slot is fully filled with PROFiPUR FSA FIRE CE the seal depth of the PROFiSEAL FSA ACRYL is minimal 3 mm;
- the allowed movement capability in practice is maximized to 7.5 %;
- when PROFiSEAL FSA ACRYL is applied at one face, the classifications are valid for PROFiSEAL FSA ACRYL at the unexposed face or at the exposed face when in combination with PROFiPUR FSA FIRE CE.

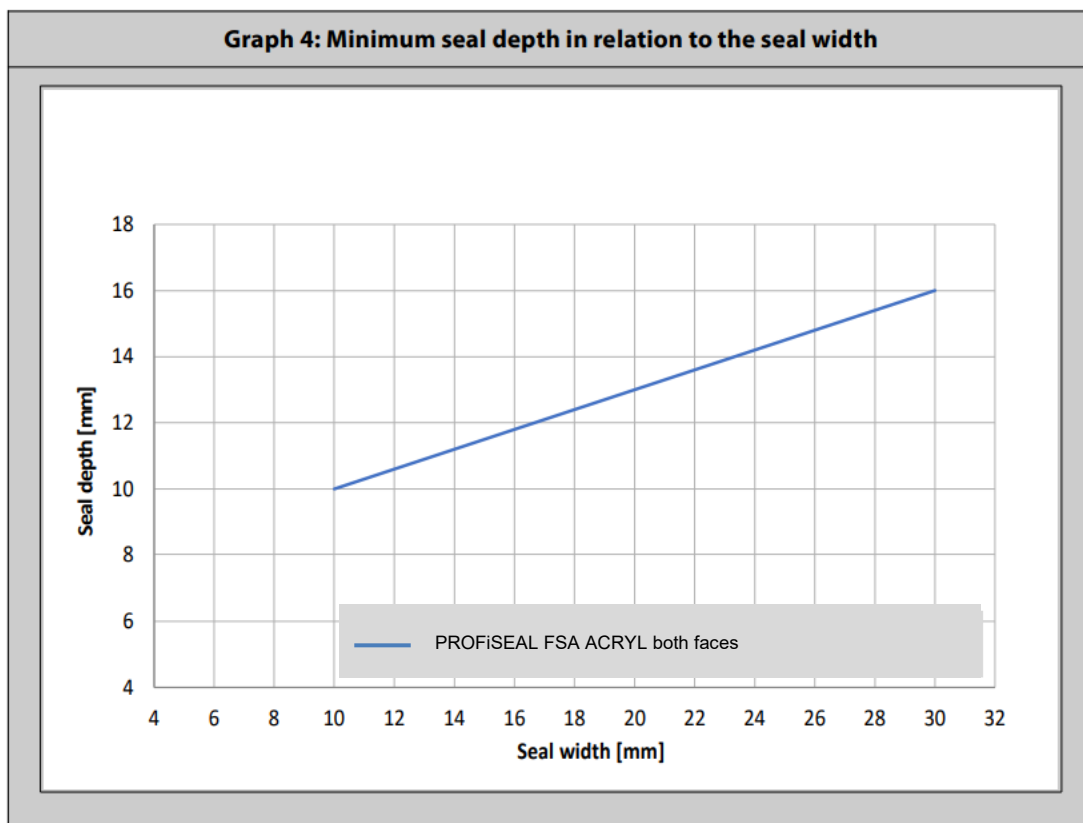


Fire resistance classification (horizontal linear joint seals in a stone wall and a wall abutting a floor, ceiling or roof)
Stone to stone wall thickness $\geq 100$ mm
<b>PROFiSEAL FSA ACRYL</b> applied at both faces
EI 180 – T – M 5 – F – W 10 to 30 E 240 – T – M 5 – F – W 10 to 30

E = Criterion integrity, I = Criterion insulation, T = Horizontal application in a vertical wall and a wall abutting a floor, M = Movement induced in %, F = Splice applied in the field, W = Permitted width range in millimeters (see Graph 4 for seal depth)

The following conditions apply:

- the classifications are valid for linear joint seals in a wall and a wall abutting a floor, ceiling or roof with an orientation as mentioned (horizontal);
- the linear joint seals may be applied in any type of wall of aerated concrete (class G4/600 or heavier), concrete, limestone or masonry with a minimal thickness as mentioned (100 mm);
- the surfaces of the material on which PROFiSEAL FSA ACRYL is applied are thoroughly cleaned and treated with primer when needed.
- the use of suitable PE / PU backing material is mandatory;
- the depth of PROFiSEAL FSA ACRYL depends on the width of the linear joint seal. The minimum depth of PROFiSEAL FSA ACRYL in relation to the width of the linear joint seal is shown in Graph 4 below. The depth of the sealant may also be increased with respect to the Graph (the lines are the minimum and recommended seal depth);
- deformation of the linear joint seals in practice is maximized to 7.5 %;
- the classifications are valid for both directions.

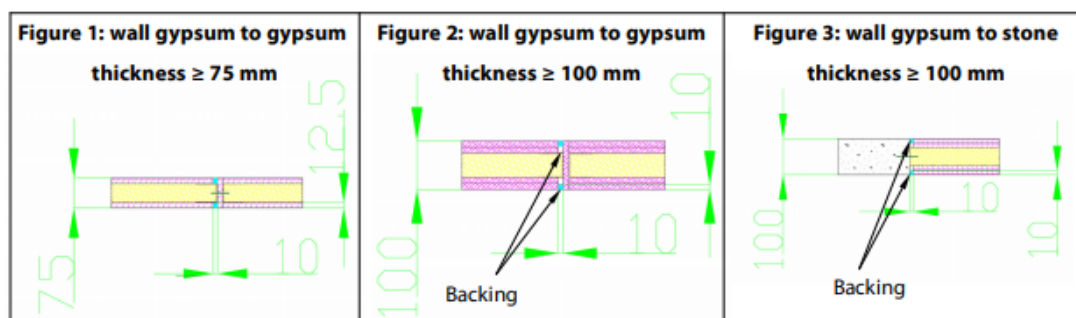


Fire resistance classification (vertical linear joint seal in a gypsum and / or stone wall)		
Stone to stone wall thickness $\geq 100$ mm		
PROFiSEAL FSA ACRYL applied at both faces connecting gypsum to gypsum		PROFiSEAL FSA ACRYL applied at both faces connecting gypsum to stone
<b>Wall thickness <math>\geq 75</math> mm (see Figure 1)</b> EI 60 – V – X – F – W 10	<b>Wall thickness <math>\geq 100</math> mm (see Figure 2)</b> EI 120 – V – X – F – W 10 E 180 – V – X – F – W 10	<b>Wall thickness <math>\geq 100</math> mm (see Figure 3)</b> EI 120 – V – X – F – W 10 E 180 – V – X – F – W 10

E = Criterion integrity, I = Criterion insulation, V = Vertical application in a vertical wall, X = No movement applied, F = Splice applied in the field, W = Permitted width range in millimeters (depth see conditions)

The following conditions apply:

- the classifications are valid for linear joint seals in a wall with an orientation as mentioned (vertical);
- the linear joint seals in wall with a thickness  $\geq 100$  mm may connect on one side to any type of wall of aerated concrete (class G4/600 or heavier), concrete, block work, limestone or masonry with a minimal thickness as mentioned (100 mm). In practice, the metal profiles of the gypsum wall are mechanically fixed at a distance every 300 mm or less. Mechanically fixation of the metal profiles is mandatory;
- the linear joint seals may connect on both sided to a gypsum wall with a minimum thickness as mentioned (75 or 100 mm). In practice, the metal profiles of the gypsum wall are mechanically fixed at a distance every 300 mm or less. Mechanically fixation of the metal profiles is mandatory;
- the classifications are only valid for constructions shown in Figures 1 to 3;
- the surfaces of the material on which the sealant is applied are thoroughly cleaned and treated with primer when needed;
- the depth of PROFiSEAL FSA ACRYL in a wall of 75 mm is 12.5 mm at both faces, representing the full thickness of the gypsum panel, see Figure 1. The depth of PROFiSEAL FSA ACRYL in a wall of 100 mm is 10 mm at both faces. The rest of the cavity is filled up with suitable PE / PU backing material, see Figure 2 and 3;
- the allowed movement capability in practice is maximized to 7.5 %;
- the classifications are valid for both directions.

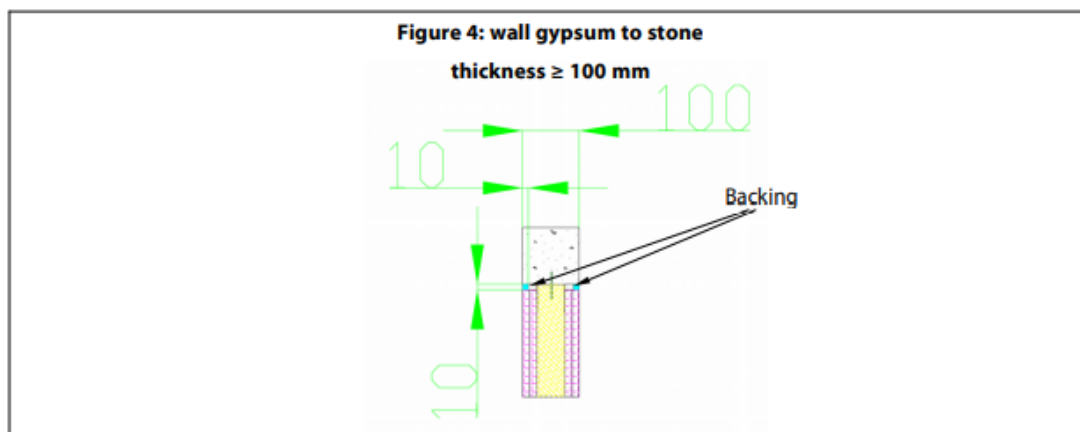


<b>Fire resistance classification</b> <b>(horizontal linear joint seals in a gypsum and stone wall)</b>
<b>PROFiSEAL FSA ACRYL</b> <b>applied at both faces connecting gypsum to stone</b>
<b>Thickness wall <math>\geq 100</math> mm (see Figure 4)</b> EI 120 – T – X – F – W 10 E 180 – T – X – F – W 10

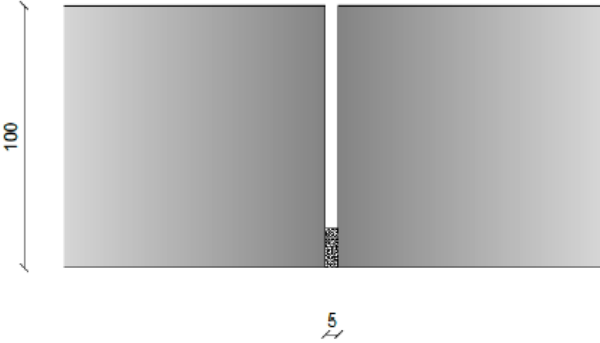
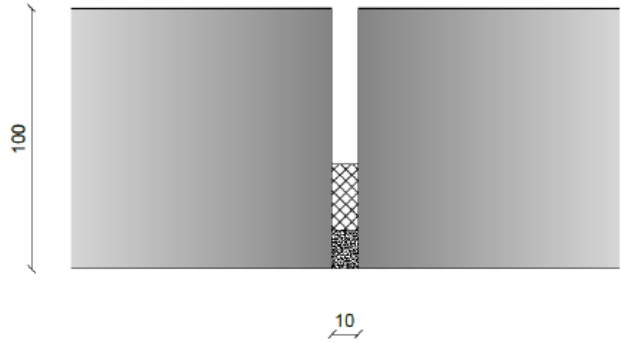
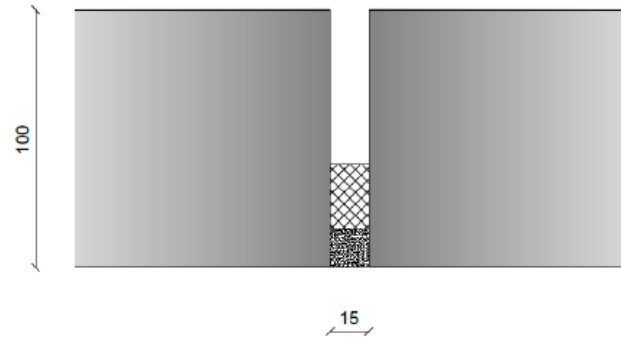
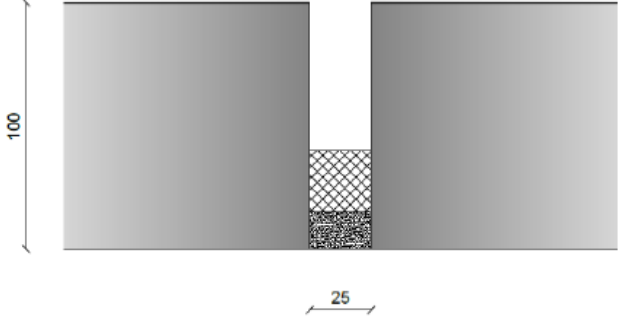
E = Criterion integrity, I = Criterion insulation, T = Horizontal application in a vertical wall and a wall abutting a floor, X = No movement applied, F = Splice applied in the field, W = Permitted width range in millimeters (depth see conditions)

The following conditions apply:

- the classifications are valid for linear joint seals in a wall with an orientation as mentioned (horizontal);
- the linear joint seals in wall with a thickness  $\geq 100$  mm may connect on one side to any type of wall of aerated concrete (class G4/600 or heavier), concrete, block work, limestone or masonry with a minimal thickness as mentioned (100 mm). In practice, the metal profiles of the gypsum wall are mechanically fixed at a distance every 300 mm or less. Mechanically fixation of the metal profiles is mandatory;
- the linear joint seals may connect on the other side to a gypsum wall with a minimum thickness as mentioned (100 mm). In practice, the metal profiles of the gypsum wall are mechanically fixed at a distance every 300 mm or less. Mechanically fixation of the metal profiles is mandatory;
- the surfaces of the material on which PROFiSEAL FSA ACRYL is applied are thoroughly cleaned and treated with Primer when needed;
- the use of suitable PE / PU backing material is mandatory;
- the depth of PROFiSEAL FSA ACRYL in a wall of 100 mm is 10 mm at both faces. The rest of the cavity is filled up with suitable PE / PU backing material, see Figure 4;
- deformation of the linear joint seals in practice is maximized to 7.5 %;
- the classifications are valid for both directions.



## Annex B – Airborne sound insulation

Joint Width = 5 mm	
Joint Width = 10 mm	
Joint Width = 15 mm	
Joint Width = 25 mm	

The PROFiSEAL FSA ACRYL sealant, 10 mm depth is backed with PU / PE backer rod.

	Joint width			
	5 mm	10 mm	15 mm	25 mm
$R_{s,w}(C;C_{tr})$	52(-1;-3) dB	53(-1;-4) dB	53(-1;-3) dB	49(-2;-4) dB
$C_{100-5000};C_{tr;100-5000}$	(0;-3) dB	(0;-4) dB	(0;-3) dB	(-1;-4) dB
$C_{50-3150};C_{tr;50-3150}$	(-1;-7) dB	(-1;-7) dB	(-1;-7) dB	(-2;-7) dB
$C_{50-5000};C_{tr;50-5000}$	(0;-7) dB	(0;-7) dB	(-1;-5) dB	(-1;-7) dB
$D_{n,e,w}$	59 dB	60 dB	60 dB	56 dB
$R_w$	29 dB	33 dB	35 dB	33 dB